

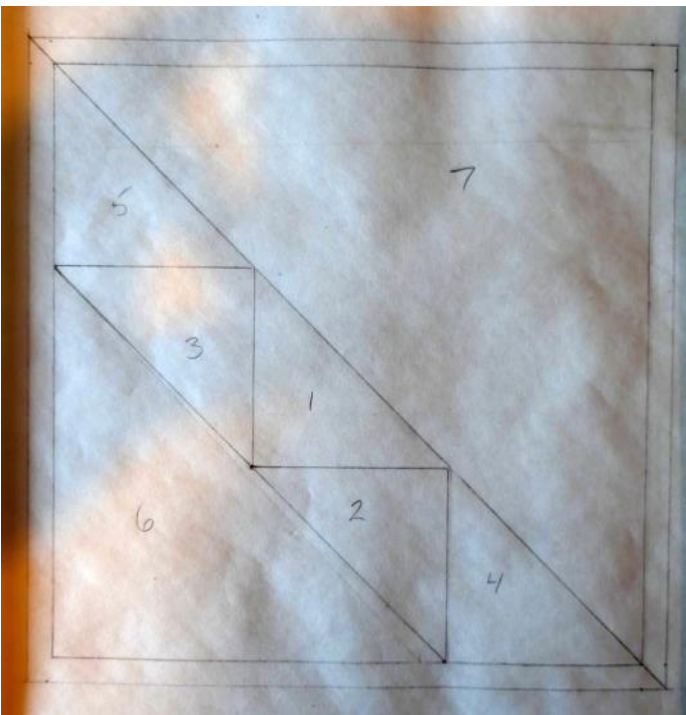
Paperless Paper Piecing

Tools: freezer paper, post card or index card, Add-a-Quarter ruler or ruler with a 1/4" seam marked on it, flower head pins and pencil.

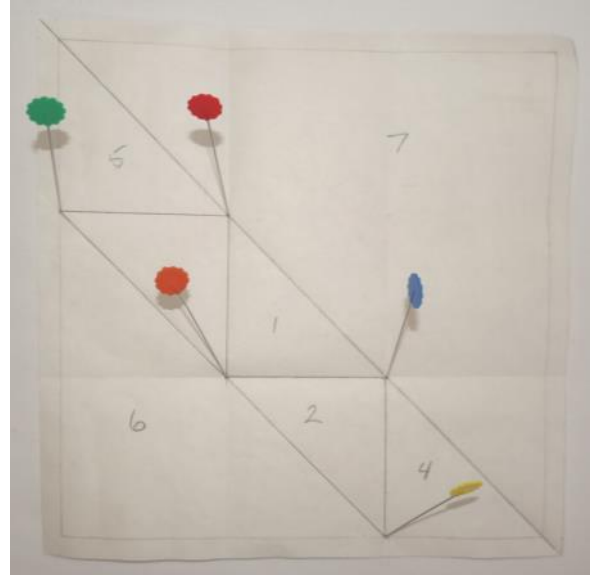


Procedure:

1. Trace the outline diagram and numbers onto paper side of the freezer paper. The numbers in the triangles and squares are the sewing order. Should be 6 1/2" square.



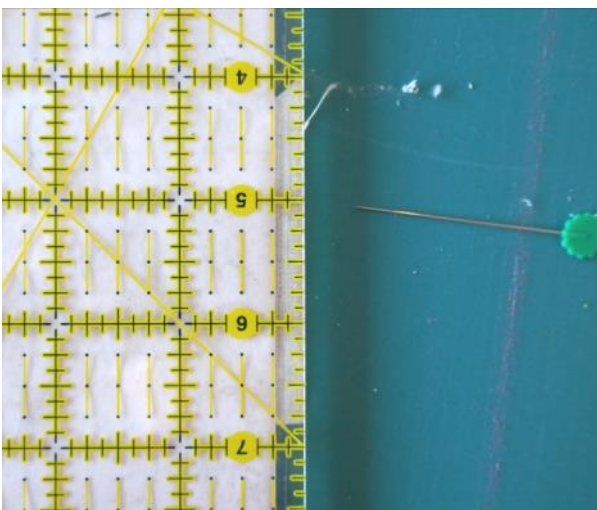
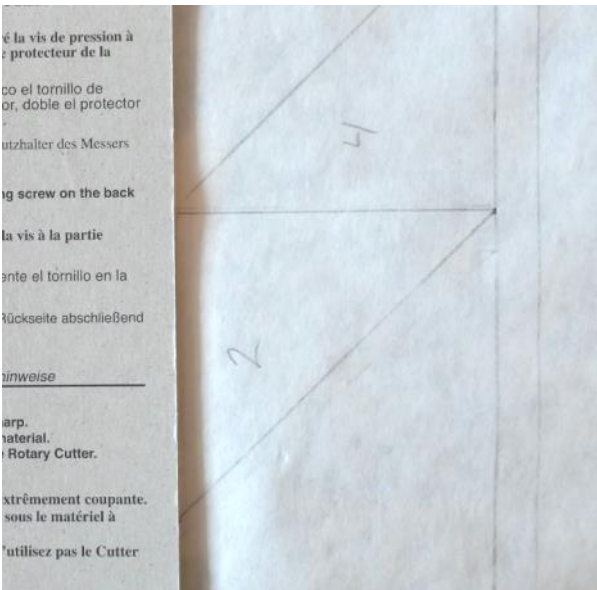
2. For reference when working on the backside of the paper, mark section corners and section outlines by poking a hole in each corner where the lines intersect and folding the paper on each line.



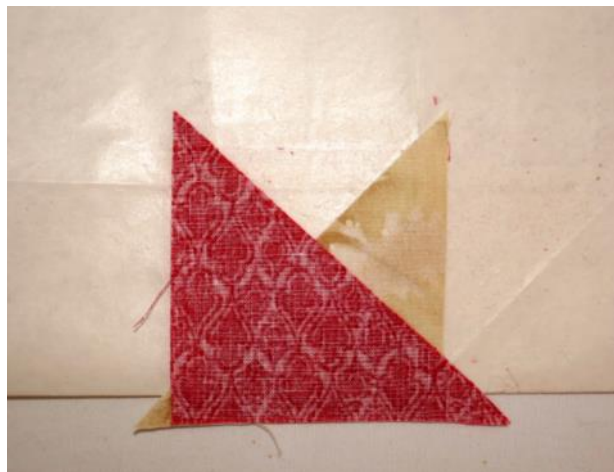
3. Working with bias. Center the (3 1/4") **B** triangle wrong side down on the waxed unprinted side of the paper on top of section 1. Make sure it covers all of section 1 and has at least 1/4" seam allowance all the way around. Place a pressing fabric (shown in blue-gold) at the edge of long side of the **B** triangle to cover the wax side so that you don't get it on the iron. Press the **B** triangle to the paper. Remove the (blue-gold) pressing fabric.



4. With paper side up, place the postcard or index card on the seam line between section 1 and 2. Fold back the paper along the card edge exposing the seam allowance fabric. Place the $\frac{1}{4}$ " line of the ruler on the fold so that $\frac{1}{4}$ " of the ruler extends into the seam allowance OR If you have a Add-a-Quarter ruler, place the lip edge against the fold so that $\frac{1}{4}$ " of the ruler extends into the seam allowance and trim fabric with rotary cutter. Make sure you are only cutting the seam allowance.

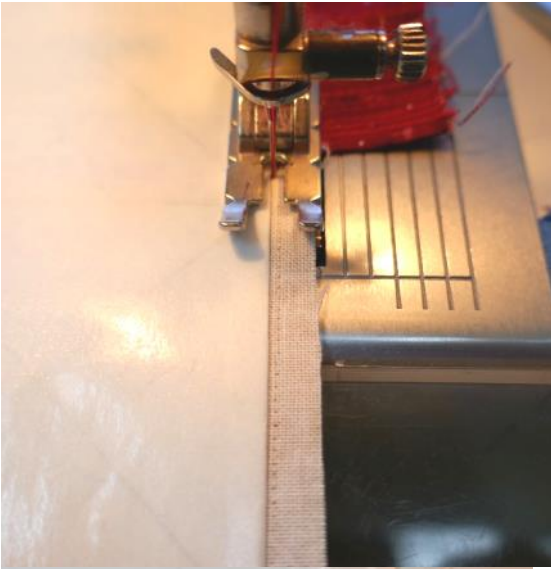


5. Turn the paper and pressed on fabric over so the fabric side is up. Place the ($3\frac{1}{4}$ ") **R** triangle for section 2, right side together, on top of Step 4 **B** triangle, positioning it so that fabric piece 2 extends $\frac{1}{4}$ " over the line between section 1 and 2 into section 2, lining up the just cut $\frac{1}{4}$ " seam. Press to waxed side. **THE AH HA** Check to see if **R** triangle will cover the entire area of section 2 including a $\frac{1}{4}$ " seam allowance all the way around by putting a pin in the corner of section 2 from the other side OR hold the paper up to the light to see the that section 2 is covered. See faint red outline through paper. Adjust accordingly if required.

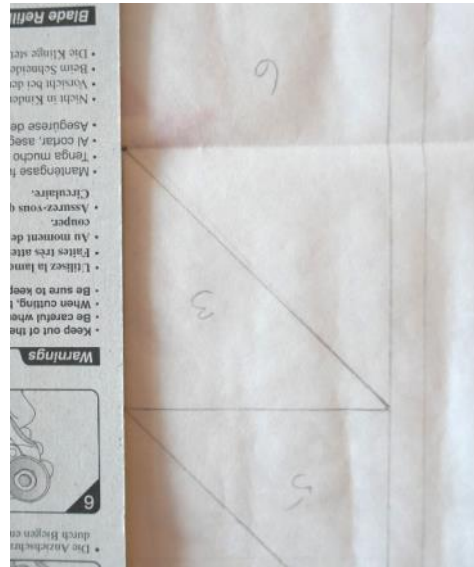
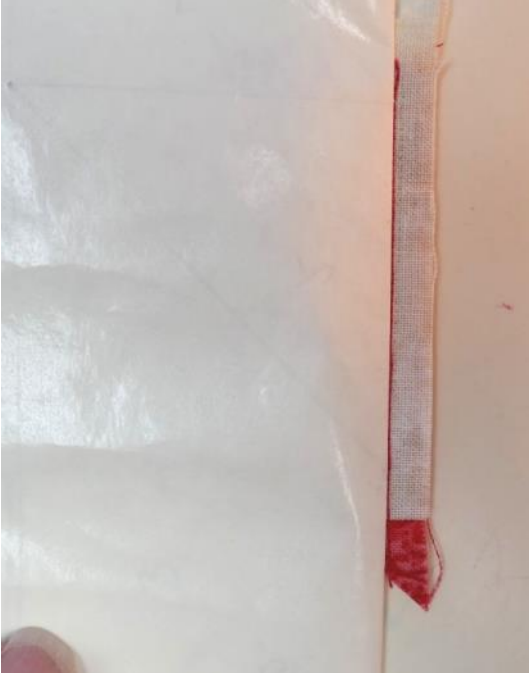


See faint red outline through paper covering section 2.

6. Set stitch length to 15 stitches to the inch. Sew right beside the line between section 1 and 2 starting about $\frac{1}{4}$ " before the line and ending $\frac{1}{4}$ " beyond the line.



8. Turn paper over. Place the postcard or index card on the seam line between section 1 and 3. Fold back the paper along the card exposing the seam allowance fabric. Place lip edge of the Add-a-Quarter ruler against the fold so that $\frac{1}{4}$ " of the ruler extends into the seam allowance. **OR** Place the $\frac{1}{4}$ " line of the ruler on the fold so that $\frac{1}{4}$ " of the ruler extends into the seam allowance. Trim off with rotary cutter. Make sure you are only cutting the seam allowance.



7. Turn paper over so the fabric side is up. Open **R** fabric. It should cover section 2. Press the seam and **R** triangle to wax side of paper.



9. Place the (3¼") **R** triangle for section 3, right side together, on top of Step 4 triangle, positioning it so that **R** extends ¼" over the line between section 1 and 3 into section 3, lining up the just cut ¼" seam. Pin. **THE AH HA** Check to see if **R** triangle will cover the entire area of section 3 including a ¼" seam allowance all the way around by folding back section 3 by putting a pin in the corners thru to the fabric or holding up to the light. Adjust accordingly. Press to wax side of paper.



10. Sew against the paper on the line between section 1 and 3 starting about ¼" before the line and ending ¼" beyond the line. See Step 6 diagrams.
 11. Turn paper over so the fabric side is up. Open **R** fabric. It should cover section 3. Press the seam to wax side of paper.



12. Repeat steps 8 through 11 for sections 2-4, 3-5, 2/3-5, and 1-6 using the [2] (3¼") **B**, [1] (7¼") **R** and [1] (5¼") **M** triangles. **NOTE:** you will have to pin section 7 **R** triangle because there is no wax area to press to.



13. Final press with iron.



14. Trim to 6½" square. Carefully remove all paper. ∞

