

72 Block Finishing

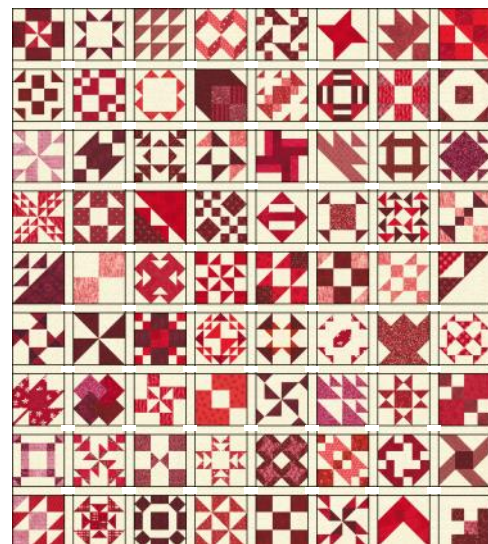
There are 3 border finishes for the quilt: one fabric border, scrappy piano key type and scrappy multi horizontal border. To make the quilt larger, two more borders are added.

72 Block		Cut:	Sub-cut:
Sashing	Vertical Horizontal	3—6½” strips 12—1½” strips	63—1½”x6½” rectangles
1st Border	White	7—2½” strips	
2nd Border	Red one fabric	8—3” strips	
	Scrappy equal width, 1”, perpendicular/piano key OR Scrappy multi width, 1”-1¾”, perpendicular/piano key	20—1½” strips 18-22—1½” to 2¼” strips	do not cut until Step 16 do not cut until Step 16
	Border cornerstones	4—3” squares	do not cut until Step 21
	Scrappy Multi Horizontal	30—1¼” strips	do not cut until Step 24
3rd Border	White Wide	8—5½” strips	
4th Border	Red	8—2” strips	
Binding		9—2½” strips	

WOF - width of fabric

Sashing

1. Layout all 72 blocks in an 8 block row by 9 block column design as you like. Sew [1] 1½”x6½” rectangle to the right side of each block in columns 1 to 8. Press to sashing.
2. Sew the blocks in rows together. Press to sashing. Each row should be 55½” long.
3. Sew [3] 1½” strips together. Make 4.
4. Cut each Step 3 unit into [2] 55½” long sashings. Make 8.
5. Place the Step 4 sashings between the rows. Sew the rows and sashings together.

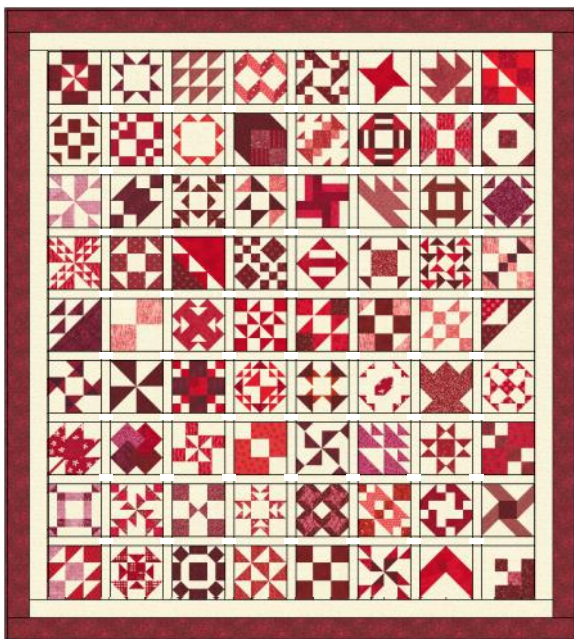


First Border

6. Sew [3] 2½" first border strips together.
7. Measure quilt center from top raw edge to bottom raw edge in the middle of quilt center. Cut [2] borders this length from the Step 6 unit. Sew one border to each side of the quilt center. Press to border.
8. Sew [2] 2½" first border strips together. Make 2.
9. Measure quilt center from side raw edge to other side raw edge in the middle of quilt center. Cut [2] borders this width from the [2] Step 8 units. Sew one border to top and one border to bottom of the quilt center. Press to border.
10. To make: One Fabric Border go to Step 11,
Scrappy Perpendicular/Piano Key Border go to Step 16,
Scrappy Multi Horizontal Border go to Step 24.

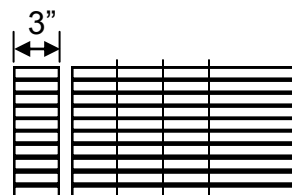
Second Border—One Fabric

11. Sew [2] 3" second border strips together.
Make 4.
12. Measure quilt center from top raw edge to bottom raw edge in the middle of quilt center. Cut [2] borders this length from [2] Step 11 units. Sew one border to each side of the quilt center. Press to border.
13. Measure quilt center from side raw edge to other side raw edge in the middle of quilt center. Cut [2] borders this width from [2] Step 11 units. Sew one border to top and one border to bottom of the quilt center. Press to border.
14. For larger quilt GO TO STEP 35.
15. GO TO STEP 41.



Second Border—Perpendicular/Piano Key

16. Choose if you want even or uneven perpendicular/piano key widths. For even width perpendicular/piano key Go To Step 17.
Uneven width perpendicular/piano keys:
On a design wall, layout/audition each strip at the finished width before cutting to size. Begin with a 1¼" finished strip. Make most of the strips about the same width and at least one larger and one smaller than the others. Continue auditioning strips until you have 21" wide finished strip set.
Cut each strip to size. **Remember to add seam allowances when cutting.** Sew the strips together. This strip set should be at least 21½" wide unfinished by WOF.
If you want to have more fabrics in the border then make [2] strip sets 21½" wide x 20" (half WOF).
17. Even width perpendicular/piano keys:
On a design wall, layout/audition [21] 1½" strips. Sew the strips together. This strip set should be 21½" wide by WOF.
If you want to have more fabrics in the border then make [2] strip sets 21½" wide x 20" (half the WOF).
18. Sub-cut Step 16/17 strip sets into 3" units.



19. Measure quilt center from top raw edge to bottom raw edge in the middle of quilt center. From Step 18 units make [2] borders this length. You may have to trim strip set to fit. Sew one border to each side of the quilt center. Press to first border.
20. Measure quilt center from side raw edge to other side raw edge in the middle of quilt center. From Step 18 units make [2] borders this width.
21. Cut [4] 3" squares. Sew one square to each end of Step 20 borders. Sew one border to top and one border to the bottom of the quilt center. Press to first border.
22. For larger quilt GO TO STEP 35.
23. GO TO STEP 41.

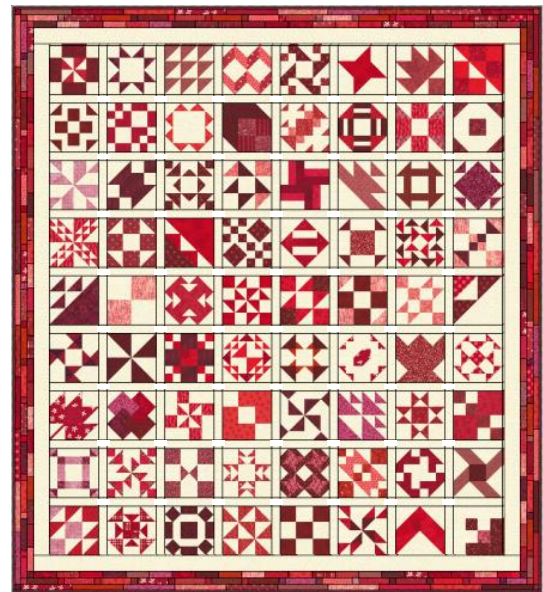
Even
Perpendicular/
Piano Key
border shown



Second Border—Multi Horizontal

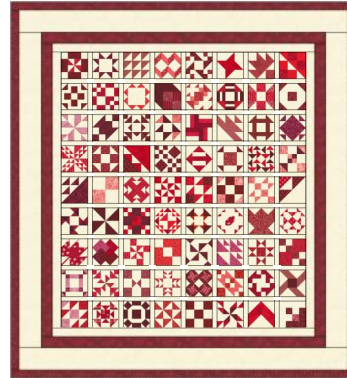
For each round you will have to center each border and trim to correct measurement.

24. Round 1: From the 1¼" strips cut [80] 1¼"x 3¾" rectangles.
25. Measure quilt center from top raw edge to bottom raw edge in the middle of quilt center. Make [2] borders this length by randomly sewing the Step 24 rectangles together end-to-end. Sew one border to each side of the quilt center. Press to first border.
26. Measure quilt center from side raw edge to other side raw edge in the middle of quilt center. Make [2] borders this width by randomly sewing the Step 24 rectangles together end-to-end. Sew one border to each side of the quilt center. Press to first border.
27. Round 2: From the 1¼" strips cut [54] 1¼"x4¾" rectangles and [50] 1¼" squares.
28. Measure quilt center from top raw edge to bottom raw edge in the middle of quilt center. Beginning and ending with a 1¼"x4¾" rectangle and alternating with a 1¼" square, make [2] borders this length from the Step 27 rectangles and squares. Sew one border to each side of the quilt center. Press to Round 1.
29. Measure quilt center from side raw edge to other side raw edge in the middle of quilt center. Beginning and ending with a 1¼"x4¾" rectangle and alternating with a 1¼" square, make [2] borders this width from the Step 27 rectangles and squares. Sew one border to each side of the quilt center. Press to Round 1.



- Round 1: Inside and first of three red borders uses 1¼"x3¾" rectangles
 Round 2: Middle red border uses 1¼" squares and 1¼"x4¾" rectangles
 Round 3: Outside and last red border uses 1¼"x 7" rectangles

30. **Round 3:** From the 1¼" strips cut [42] 1¼" x 7" rectangles.
31. Measure quilt center from top raw edge to bottom raw edge in the middle of quilt center. Make [2] borders this length from the Step 30 rectangles. Sew one border to each side of the quilt center. Press to Round 3.
32. Measure quilt center from side raw edge to other side raw edge in the middle of quilt center. Make [2] borders this width from the Step 30 rectangles. Sew one border to each side of the quilt center. Press to Round 3.
33. For larger quilt GO TO STEP 35.
34. GO TO STEP 41.



Third Border—Wide White

35. Sew [2] 5½" border strips together. Make 4.
36. Measure quilt center from top raw edge to bottom raw edge in the middle of quilt center. Cut [2] borders this length from [2] Step 35 units. Sew one border to each side of the quilt center. Press to border.
37. Measure quilt center from side raw edge to other side raw edge in the middle of quilt center. Cut [2] borders this width from [2] Step 35 units. Sew one border to top and one border to the bottom of the quilt center. Press to border.

Fourth Border—Red

38. Sew [2] 2" border strips together. Make 4.
39. Measure quilt center from top raw edge to bottom raw edge in the middle of quilt center. Cut [2] borders this length from [2] Step 38 units. Sew one border to each side of the quilt center. Press to border.
40. Measure quilt center from side raw edge to other side raw edge in the middle of quilt center. Cut [2] borders this width from [2] Step 38 units. Sew one border to top and one border to the bottom of the quilt center. Press to border.

Layer, Quilt, Bind & Label

41. Layer quilt top, batting and backing and quilt as desired.
42. Stitch the binding strips together end to end using diagonal seams. Fold this strip wrong sides together, lengthwise in half. Press. Stitch to front of quilt matching raw edges and mitering the corners. Press to binding.
43. Fold binding over raw edges to quilt underside and stitch folded edge to quilt back covering seam.
44. Create label with name of quilt, your name, location, who for and date. Stitch to quilt back. ∞